



Station Solo

Quick Start Guide

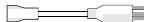
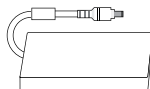
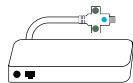
Kurzanleitung / Instructions de démarrage / Guía de inicio rápido
Guida introduttiva / Snelstartgids

clover.com/help/international-station-solo



Included

Inclus
Im Lieferumfang
Se incluye
Incluso
Inclusief



Flex and printer sold separately

Flex et imprimante vendus séparément
Flex und Drucker separat erhältlich
El dispositivo Flex y la impresora se
venden por separado
Flex e stampante venduti separatamente
Flex en printer afzonderlijk verkrijgbaar



**Plug in last, to a grounded
AC power outlet.**

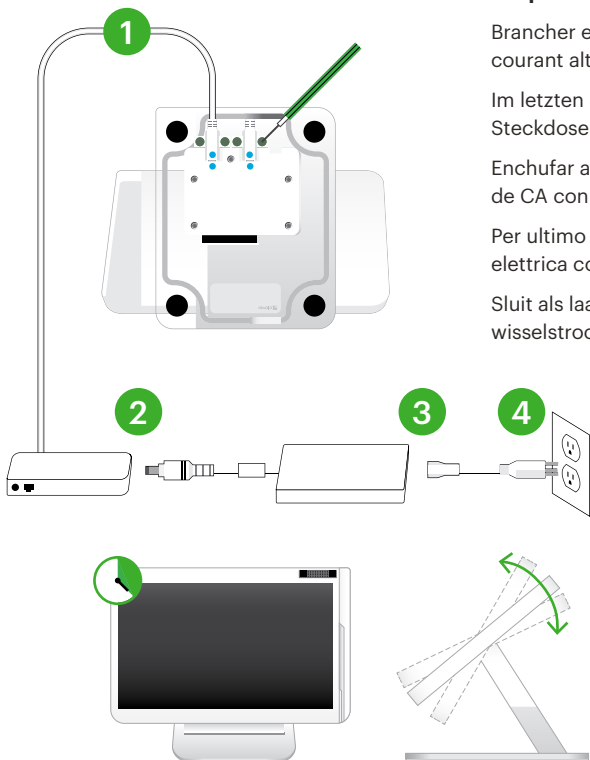
Brancher en dernier sur une prise de courant alternatif (CA) mise à la terre.

Im letzten Schritt in eine geerdete Steckdose einstecken.

Enchufar al último, a un tomacorriente de CA con conexión a tierra.

Per ultimo inserire in una presa elettrica con messa a terra.

Sluit als laatste aan, op een geaard wisselstroomstopcontact.



Printer sold separately

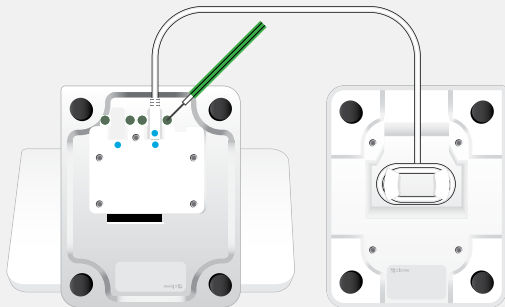
Imprimante vendue séparément

Drucker separat erhältlich

La impresora se vende por separado

Stampante venduta separatamente

Printer afzonderlijk verkrijgbaar



Flex sold separately

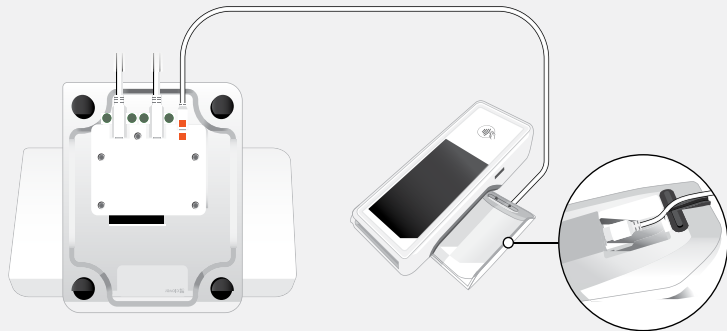
Flex vendu séparément

Flex separat erhältlich

El dispositivo Flex se vende por separado

Flex venduto separatamente

Flex afzonderlijk verkrijgbaar



Innovation, Science and Economic Development Canada (ISED) statement: CAN ICES-3 (B)/NMB-3(B)

This device complies with ISED's license-exempt RSSs. Operation is subject to the following two conditions:

- (1) this device may not cause interference, and
- (2) this device must accept any interference, including interference that may cause undesired operation of the device.

Le présent appareil est conforme aux CNR d'Industrie Canada applicables aux appareils radio exempts de licence. L'exploitation est autorisée aux deux conditions suivantes:

- (1) l'appareil ne doit pas produire de brouillage, et
- (2) l'utilisateur de l'appareil doit accepter tout brouillage radioélectrique subi, même si le brouillage est susceptible d'en compromettre le fonctionnement.

Caution:

- (1) the device for operation in the band 5150-5250 MHz is only for indoor use to reduce the potential for harmful interference to co-channel mobile satellite systems;
- (2) where applicable, antenna type(s), antenna models(s), and worst-case tilt angle(s) necessary to remain compliant with the e.i.r.p. elevation mask requirement set forth in section 6.2.2.3 shall be clearly indicated.

Avertissement:

Le guide d'utilisation des dispositifs pour réseaux locaux doit inclure des instructions précises sur les restrictions susmentionnées, notamment :

- (1) les dispositifs fonctionnant dans la bande 5150-5250 MHz sont réservés uniquement pour une utilisation à l'intérieur afin de réduire les risques de brouillage préjudiciable aux systèmes de satellites mobiles utilisant les mêmes canaux;
- (2) lorsqu'il y a lieu, les types d'antennes (s'il y en a plusieurs), les numéros de modèle de l'antenne et les pires angles d'inclinaison nécessaires pour rester conforme à l'exigence

de la p.i.r.e. applicable au masque d'élévation, énoncée à la section 6.2.2.3, doivent être clairement indiqués

This equipment complies with IC RSS-102 RF exposure limits set forth for an uncontrolled environment. This equipment should be installed and operated with minimum distance 20 cm between the radiator & your body.

Cet équipement est conforme aux limites d'exposition aux rayonnements IC établies pour un environnement non contrôlé. Cet équipement doit être installé et utilisé avec un minimum de 20 cm de distance entre la source de rayonnement et votre corps.


CE RF Exposure Compliance

This device meets the EU requirements (1999/519/EC) and the International Commission on Non-Ionizing Radiation Protection (ICNIRP) on the limitation of exposure of the general public to electromagnetic fields by way of health protection.

This device is restricted to indoor use only when operating in the 5150 to 5350 MHz frequency range.

IMPORTANT for UK Power Adapter Cord

If the available socket outlet is not suitable for the plug supplied with this equipment, it should be cut off and an appropriate three pin plug fitted. With alternative plugs on approved 3 amp fuse must be fitted in the plug or adaptor or in the main fuse box.

The plug severed from the mains lead must be destroyed, as a plug with bared flexible cords is hazardous if engaged in a live socket outlet. In the event of replacing the plug fuse, use a 3 amp fuse approved by ASTA to BS 1362, i.e. carries the  mark. Always replace the fuse cover, never use plugs with the fuse cover omitted.

WARNING — THIS APPLIANCE MUST BE EARTHED.

The wires in this mains lead are coloured in accordance with the following code:

Green-and-Yellow = Earth Blue = Neutral Brown = Live

As the colour of the wiring in the mains lead of this appliance may not correspond with the coloured markings identifying the terminals in your plug, proceed as follows:

- The wire which is coloured Green-and-Yellow must be connected to the terminal in the plug which is marked with the letter “E”, or by the earth symbol or coloured Green-and-Yellow.
- The wire which is coloured Blue must be connected to the terminal which is marked with the letter “N” or coloured Black or Blue.
- The wire which is coloured Brown must be connected to the terminal which is marked with the letter “L” or coloured Red or Brown.

EU Declaration of Conformity

Hereby, Clover Network, Inc. declares that the radio equipment type, C305 is in compliance with Directive 2014/53/EU. The full text of the EU declaration of conformity is available at the following internet address:

eu.clover.com/eu-compliance

The frequency band and the maximum transmitted power in EU are listed below:

2400MHz – 2483.5MHz: 20 dBm (EIRP)

5150MHz – 5250MHz: 23 dBm (EIRP)

5250MHz – 5350MHz: 23 dBm (EIRP)

5470MHz – 5725MHz: 30 dBm (EIRP)

LTE Band 1: 23dBm (conducted)

LTE Band 3: 23dBm (conducted)

LTE Band 7: 23dBm (conducted)

LTE Band 8: 23dBm (conducted)

LTE Band 20: 23dBm (conducted)

NOTE: 5150MHz-5350MHz is for indoor use only.

Caution: Exposure to Radio Frequency Radiation

This equipment complies with EU radiation exposure limits set forth for an uncontrolled environment. This equipment should be installed and operated with minimum distance 20cm between the radiator & your body.

Station Solo International

Model Number: C502

Patent

clover.com/patents

Clover Network, Inc.
415 N Mathilda Ave
Sunnyvale, CA 94085, USA

EU Importer: Marketplace
Merchant Solutions Ltd
Unit 9, Richview Office Park
Clonskeagh, Dublin 14, Ireland



Waste Electrical and Electronic Equipment-WEEE

NOTE: This product is covered electronic equipment under the European Union's Waste from Electrical and Electronic Equipment ("WEEE") Directive (2012/19/EU). The WEEE Directive requires that covered equipment be collected and managed separately from typical household waste in all EU member states. Please follow the guidance of your local environmental authority or ask the shop where you purchased the product for collection or recycling options.



HDYJ5003010-3A

v4